



# CONNECTING THE DOTS

SE BEYOND TECHNOLOGY

SwissEd 2024  
Oliver Fels

# PERSONAL BUBBLES



Humans live in personalized bubbles

The bubble defines the level of complexity they frequently deal with

Stepping outside the bubble raises challenges

# PROFESSIONAL BUBBLES



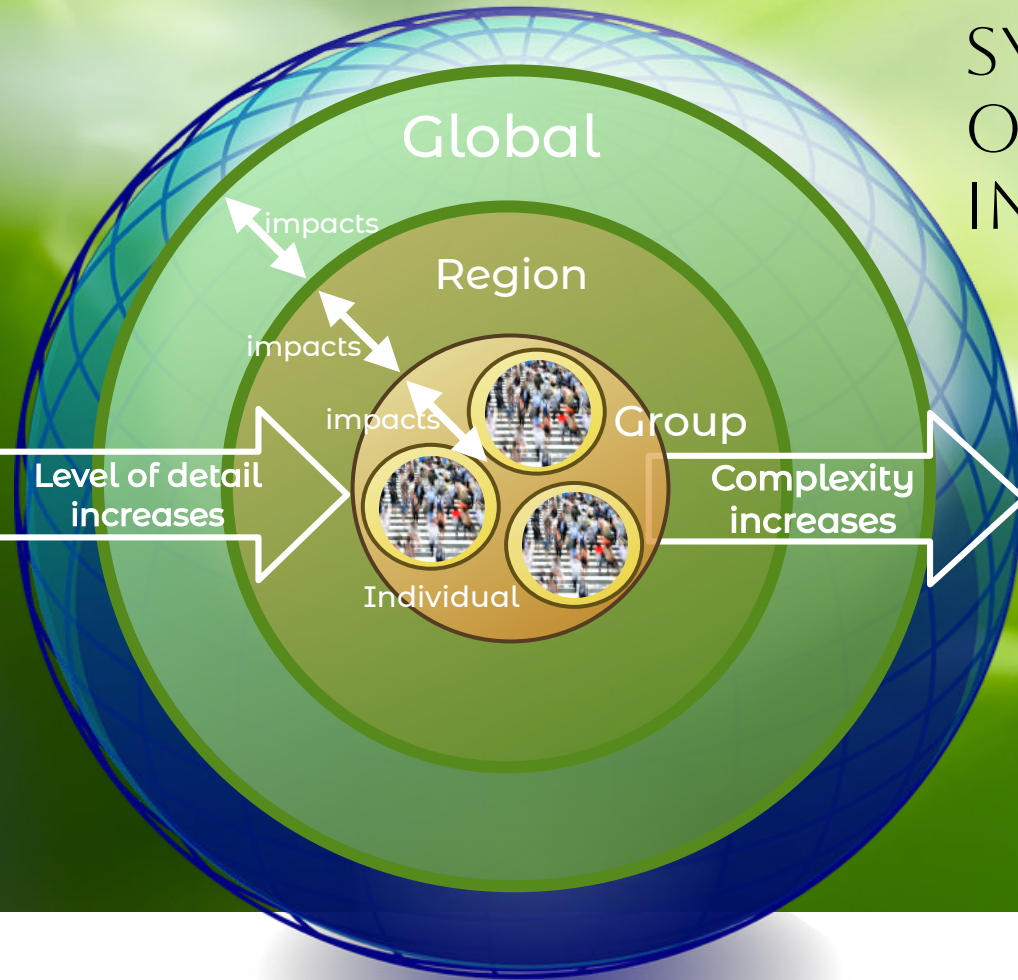
Regardless of the role,  
professionals work in  
bubbles

The bubble defines the level  
of complexity they  
frequently deal with

Each stakeholder has his  
own bubble of interest



# THE IMMINENT SIMILARITY TO SYSTEMS ENGINEERING: THE ONION MODEL OF BUBBLES OF INTEREST



Stepping outside the bubble increases complexity and abstraction

Stepping outside the bubble raises challenges

Stepping inside the bubbles, the level of detail increases



Stakeholder  
Requirements  
Needs  
Pains



Products  
System

BRIDGING THE BUBBLES





Emotional

Facts & Figures

BRIDGE OVER TROUBLED WATER

BRIDGING THE BUBBLES



**Stakeholder  
Management  
Yesterday**

**COMPLEXITY**

**Stakeholder  
Management  
Today**

**THINGS HAVE CHANGED**



## ELABORATE

To feel your stakeholders needs, you will have to get a feel for their bubble.

Adaption to their level of complexity is elementary

Identifying new and unknown bubbles brings new insights





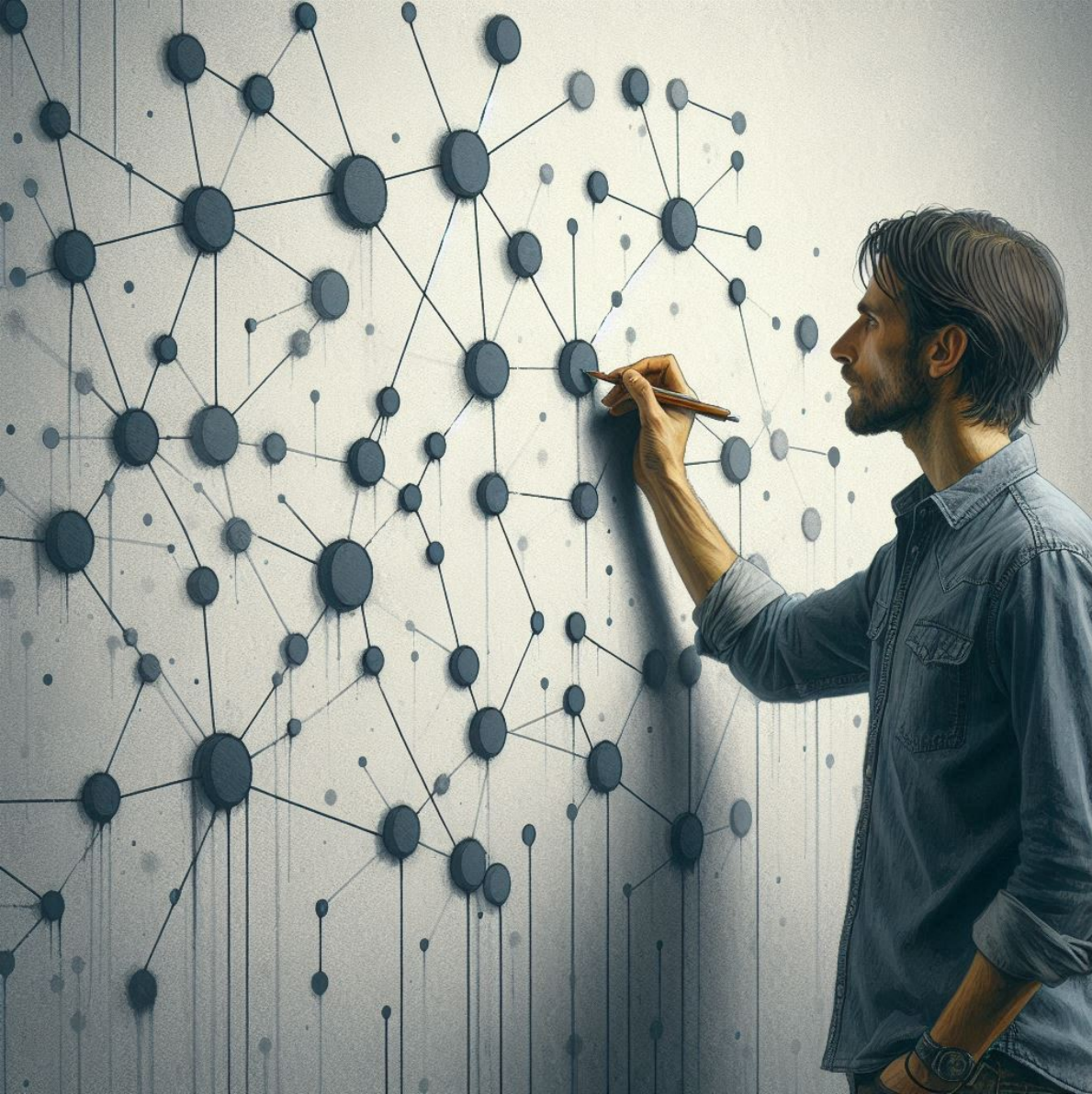
# ORCHESTRATE

Systems engineering is orchestrating bubbles of interest.

Analytical and social and planning skills are elementary requirements.

The most difficult pictures to paint are big pictures.





# SYSTEMS ENGINEERING CONNECT THE DOTS

*“The action of **working artfully** to bring something about.  
‘Engineered systems’ may be composed of any or all of  
**people, products, services, information, processes, and natural elements.**”*

INCOSE

In other words:

## **Bubbles**

Your task is to bring them artfully together and keep the dots connected.



# ROLE BLURRING

You no longer have a specific role, today.  
You have tasks. Many tasks.

So you have to

**BRIDGE THE BUBBLES &  
CONNECT THE DOTS**





TIME TO WAKE UP



THANK YOU FOR  
LISTENING